



Property type : Detached Villa

Swimming pool : Private

House area : 422 m²

Location : Orihuela Costa

Plot area : 918 m²

Bedrooms : 5

Bathrooms : 5

✓ Garden

✓ Garage

✓ Basement

✓ Solarium

✓ Pre-air conditioning

✓ Jacuzzi

NEW BUILD LUXURY VILLA IN PUNTA PRIMA

Exclusive New Build villa in the prestigious and quiet urbanization of Punta Prima, Orihuela Costa. Villa located 7-minute walk to the beach of Punta Prima.

With a constructed area of 422m² and a 918m² plot, villa has 5 bedrooms, 5 bathrooms, a large living room-kitchen-dining room, a separate laundry room, 2 terraces on the ground floor and first floor, a large multipurpose area in the semi-basement, a garage for two cars and private pool.

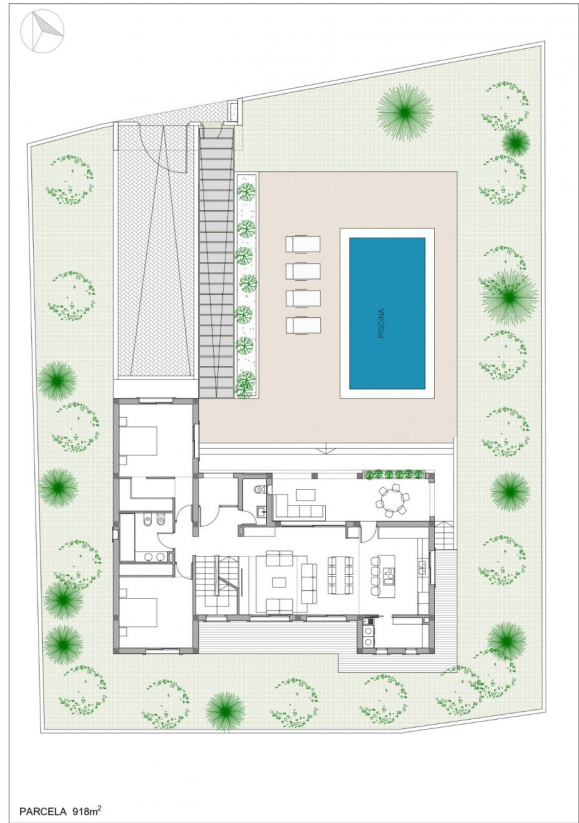
It is under construction at 50%, it is possible to sell under construction or completely finished. The final price may vary depending on the level of finishes.

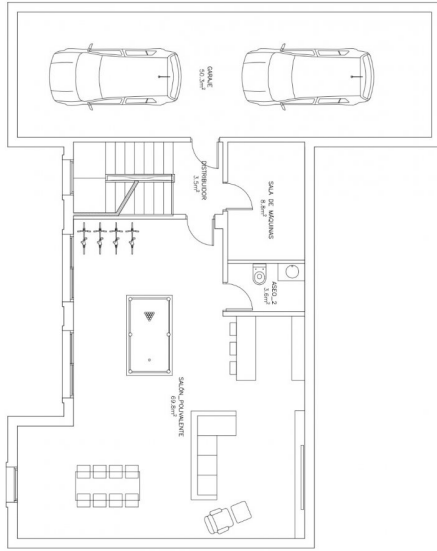
In the surroundings you will find a wide range of nice restaurants, cafes, supermarkets, pharmacies and all the amenities you may need.

Punta Prima, located just 5 km from Torrevieja, is characterized by good communication and health infrastructures, the proximity to Alicante airport, and the number of services open throughout the year.

Just 10 km away we can find the golf courses of Villamartín, Campoamor, Las Ramblas, Las Colinas and Lo Romero, as well as the commercial centres of La Zenia and Habaneras.

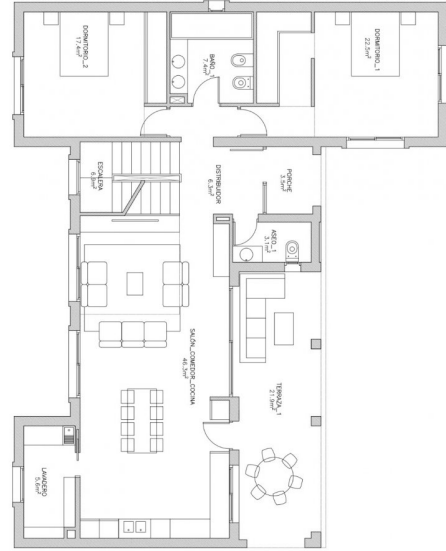






CUADRO DE SUPERFICIES TOTALES

PLANTA SOTANO		PLANTA SOTANO		PLANTA SOTANO	
DORMITORIO_1	22.5m ²	DORMITORIO_3	15.1m ²	GARAJE	50.3m ²
BAÑO_1	7.4m ²	BAÑO_3	5.8m ²	DISTRIBUIDOR	3.5m ²
DORMITORIO_2	17.4m ²	VESTIDOR	5.5m ²	SALA DE MAQUINAS	8.8m ²
DISTRIBUIDOR	8.3m ²	DISTRIBUIDOR	14.8m ²	ASEO_2	3.0m ²
ASEO_1	3.1m ²	DORMITORIO_4	13.9m ²	SALÓN POLIVALENTE	89.8m ²
SALÓN_COMEDOR_COCHINA	46.5m ²	DORMITORIO_5	13.4m ²		
ESCALERA	6.9m ²	BAÑO_4	14.1m ²		
LAVADERO	3.6m ²	TERRAZA_1	31.5m ²		
PORCHE	3.5m ²				
TERRAZA_1	21.9m ²				
SUP. ÚTIL INTERIOR	115.5m ²	SUP. ÚTIL INTERIOR	82.4m ²	SUP. ÚTIL INTERIOR	85.7m ²
SUP. ÚTIL EXTERIOR	23.4m ²	SUP. ÚTIL EXTERIOR	51.3m ²	SUP. ÚTIL GARAJE	50.3m ²
SUP. ÚTIL INTERIOR TOTAL 283.6m ²		SUP. ÚTIL INTERIOR TOTAL 283.6m ²		SUP. ÚTIL INTERIOR TOTAL 283.6m ²	
SUP. ÚTIL EXTERIOR TOTAL 76.7m ²		SUP. ÚTIL EXTERIOR TOTAL 76.7m ²		SUP. ÚTIL EXTERIOR TOTAL 76.7m ²	
SUP. GARAJE 50.3m ²		SUP. GARAJE 50.3m ²		SUP. GARAJE 50.3m ²	
SUPERFICIE PARCELA 819.0m ²		SUPERFICIE PARCELA 819.0m ²		SUPERFICIE PARCELA 819.0m ²	
SUPERFICIE CONSTR. TOTAL 422.46m ²		SUPERFICIE CONSTR. TOTAL 422.46m ²		SUPERFICIE CONSTR. TOTAL 422.46m ²	



CUADRO DE SUPERFICIES TOTALES

PLANTA BALA		PLANTA BALA		PLANTA BALA	
DORMITORIO_1	22.5m ²	DORMITORIO_3	15.1m ²	GARAJE	50.3m ²
BAÑO_1	7.4m ²	BAÑO_3	5.8m ²	DISTRIBUIDOR	3.5m ²
DORMITORIO_2	17.4m ²	VESTIDOR	5.5m ²	SALA DE MAQUINAS	8.8m ²
DISTRIBUIDOR	8.3m ²	DISTRIBUIDOR	14.8m ²	ASEO_2	3.0m ²
ASEO_1	3.1m ²	DORMITORIO_4	13.9m ²	SALÓN POLIVALENTE	89.8m ²
SALÓN_COMEDOR_COCHINA	46.5m ²	DORMITORIO_5	13.4m ²		
ESCALERA	6.9m ²	BAÑO_4	14.1m ²		
LAVADERO	3.6m ²	TERRAZA_1	31.5m ²		
PORCHE	3.5m ²				
TERRAZA_1	21.9m ²				
SUP. ÚTIL INTERIOR	115.5m ²	SUP. ÚTIL INTERIOR	82.4m ²	SUP. ÚTIL INTERIOR	85.7m ²
SUP. ÚTIL EXTERIOR	23.4m ²	SUP. ÚTIL EXTERIOR	51.3m ²	SUP. ÚTIL GARAJE	50.3m ²
SUP. ÚTIL INTERIOR TOTAL 283.6m ²		SUP. ÚTIL INTERIOR TOTAL 283.6m ²		SUP. ÚTIL INTERIOR TOTAL 283.6m ²	
SUP. ÚTIL EXTERIOR TOTAL 76.7m ²		SUP. ÚTIL EXTERIOR TOTAL 76.7m ²		SUP. ÚTIL EXTERIOR TOTAL 76.7m ²	
SUP. GARAJE 50.3m ²		SUP. GARAJE 50.3m ²		SUP. GARAJE 50.3m ²	
SUPERFICIE PARCELA 819.0m ²		SUPERFICIE PARCELA 819.0m ²		SUPERFICIE PARCELA 819.0m ²	
SUPERFICIE CONSTR. TOTAL 422.46m ²		SUPERFICIE CONSTR. TOTAL 422.46m ²		SUPERFICIE CONSTR. TOTAL 422.46m ²	