



**Property type :** Detached Villa

**Location :** Moraira\_Teulada

**Bedrooms :** 4

**Bathrooms :** 4

**Swimming pool :** Private

**Views :** Sea views

**House area :** 346 m<sup>2</sup>

**Plot area :** 13000 m<sup>2</sup>

- ✓ Garden
- ✓ Pre-air conditioning
- ✓ Basement
- ✓ Solarium

#### NEW BUILD VILLA IN MORAIRA WITH THE SEA VIEWS

New Build villa in Moraira with private pool and sea views.

On the ground floor we find a large living-dining area and open plan kitchen, master bedroom with walking wardrobe and bathroom, front terrace with access to the pool.

On the first floor is 3 bedrooms with fitted wardrobes, 3 bathrooms en suite.

As well here you have basement of 81m2 with wine cellar.

Villa will be build using high quality materials.

The kitchen will be chosen by the client, kitchen cabinets, worktop and appliances.

Air conditioning with climate control system (condense) in the living rooms and bedrooms. Mitsubishi brand.

The swimming pool will be built with an outdoor shower (hot/cold water connection).

Automatic entrance gate for the cars with remote control and automatic pedestrian door.

Garden to be chosen by the client.

Moraira is a small town with with good restaurants, bars and plenty of supermarkets around.

There is a very pleasant beach right next to town that is great for families.

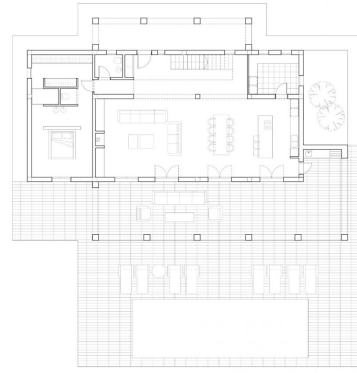
The seafront offers tremendous views of Penon Ifach across the bay in Calpe. The coast road getting there is well worth doing with some spectacular views.

Moraira situated about 1 hour 15 minutes North up the A7 from Alicante airport its fairly easy to get to. It's about the same distance or a bit less from Valencia airport.



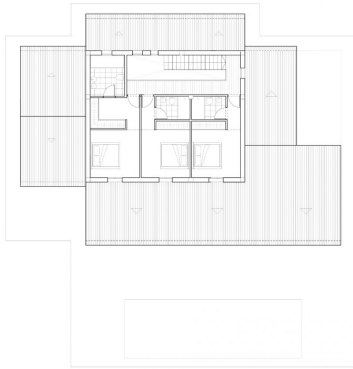


Superficie	Construida
Puerta Baja	148.35 m <sup>2</sup>
Vestíbulo	23.84 m <sup>2</sup>
Puerta 1	77.07 m <sup>2</sup>
Puerta 2	77.07 m <sup>2</sup>
Salón	147.05 m <sup>2</sup>
Cocina	45.03 m <sup>2</sup>
Alcoba	45.03 m <sup>2</sup>
Baño	45.03 m <sup>2</sup>
Puerta Alta	97.05 m <sup>2</sup>
Vestíbulo	97.05 m <sup>2</sup>
Puerta Sótano	81.24 m <sup>2</sup>
Vestíbulo	12.62 m <sup>2</sup>
Bodega	12.62 m <sup>2</sup>



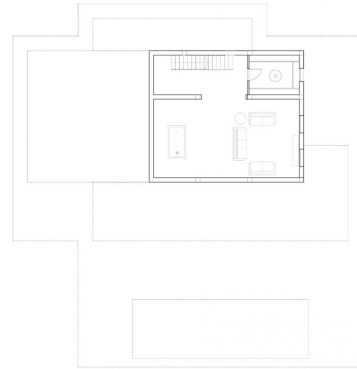
PLANTA BAJA  
1:100

Superficie	Construida
Puerta Baja	148.35 m <sup>2</sup>
Vestíbulo	23.84 m <sup>2</sup>
Puerta 1	77.07 m <sup>2</sup>
Puerta 2	77.07 m <sup>2</sup>
Salón	147.05 m <sup>2</sup>
Cocina	45.03 m <sup>2</sup>
Alcoba	45.03 m <sup>2</sup>
Baño	45.03 m <sup>2</sup>
Puerta Alta	97.05 m <sup>2</sup>
Vestíbulo	97.05 m <sup>2</sup>
Puerta Sótano	81.24 m <sup>2</sup>
Vestíbulo	12.62 m <sup>2</sup>
Bodega	12.62 m <sup>2</sup>

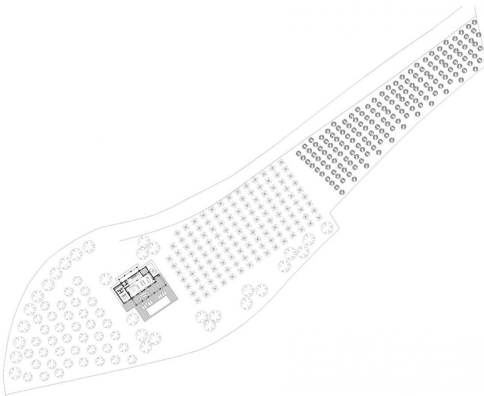


PLANTA ALTA  
1:100

Superficie	Construida
Puerta Baja	148.35 m <sup>2</sup>
Vestíbulo	23.84 m <sup>2</sup>
Puerta 1	77.07 m <sup>2</sup>
Puerta 2	77.07 m <sup>2</sup>
Salón	147.05 m <sup>2</sup>
Cocina	45.03 m <sup>2</sup>
Alcoba	45.03 m <sup>2</sup>
Baño	45.03 m <sup>2</sup>
Puerta Alta	97.05 m <sup>2</sup>
Vestíbulo	97.05 m <sup>2</sup>
Puerta Sótano	81.24 m <sup>2</sup>
Vestíbulo	12.62 m <sup>2</sup>
Bodega	12.62 m <sup>2</sup>



PLANTA SÓTANO  
1:100



EXPLANTERIO  
1:100