



Property type : Detached Villa

Swimming pool : Yes

House area : 149 m²

Location : Pilar de La Horadada

Plot area : 452 m²

Bedrooms : 3

Bathrooms : 4

✓ Pre-air conditioning

NEW BUILD VILLAS IN PILAR DE LA HORADADA ON THE GOLF COURSE

3 New Build exclusive villas in Lo Romero Golf are the perfect opportunity to enjoy a home on the front line of the golf course.

This residential is characterized by its fantastic location and its spectacular views to the sea and the golf course.

The sophisticated and modern architecture used, as well as its careful selection of qualities, make our homes unique projects, aimed at demanding clients, who are looking for a good investment and quality of life.

New Build detached villas has 3 bedrooms, 4 bathrooms, open plan kitchen with the lounge area, fitted wardrobes, private garden with the pool and off road parking space.

Lo Romero Golf Resort is located in a privileged area of the municipality of Pilar de la Horadada (Alicante), in the heart of the Costa Blanca.

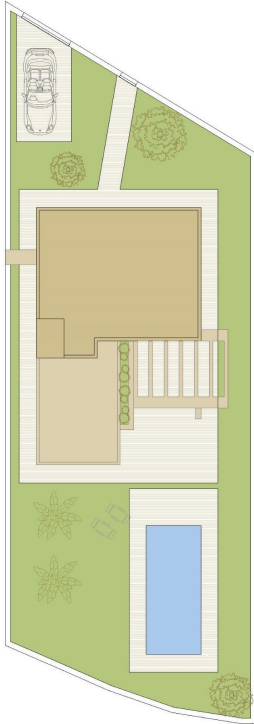
The 18-hole golf course is close to beautiful beaches with crystal-clear waters and is perfectly connected by road to the cities of Alicante and Murcia, as well the airports of Corvera (Murcia) and Alicante are respectively 40 and 55 minutes away.

Pilar de la Horadada is a typical Spanish village in the most southern part of the Costa Blanca.

The large main street has supermarkets, lots of shops, restaurants and bars and some lovely squares.

The beautiful beaches of Torre de la Horadada and Mil Palmeras with fine sand promenade is just 5 minutes away.





VIVIENDA TIPO
V.3

SUPERFICIES ÚTILES / OCCUPIABLE AREA

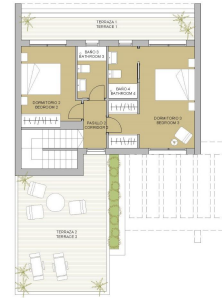
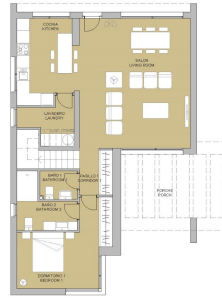
PLANTA BAJA / GROUND FLOOR	
BAÑO / BATHROOM	33.95 m ²
COCINA / KITCHEN	11.35 m ²
LAVADERO / LAUNDRY	4.60 m ²
DORMITORIO 1 / BEDROOM 1	8.60 m ²
BANJO / BATHROOM 2	2.40 m ²
BANJO / BATHROOM 3	6.60 m ²
PASO / CORRIDOR	3.50 m ²

PLANTA PRIMERA / FIRST FLOOR	
DORMITORIO 2 / BEDROOM 2	10.25 m ²
DORMITORIO 3 / BEDROOM 3	14.25 m ²
BANJO / BATHROOM 4	3.50 m ²
BANJO / BATHROOM 5	3.50 m ²
PASO / CORRIDOR	2.55 m ²
ESCALERA / STAIR	5.40 m ²

FORCHES / PORCH	19.40 m ²
TERRAZA 1 / TERRACE 1	9.20 m ²
TERRAZA 2 / TERRACE 2	24.40 m ²

SUPERFICIES CONSTR. / BUILT AREA

SUP. CERRADA / CLOSED AREA	154.00 m ²
CUBIERTA AREA + PORCHES + TERRACES	207.00 m ²
TOTAL CONSTR. AREA	361.00 m ²
PARCELA / PLOT	453.00 m ²



VIVIENDA TIPO
V.3

SUPERFICIES ÚTILES / OCCUPIABLE AREA

PLANTA BAJA / GROUND FLOOR	65.25 m ²
COCINA / KITCHEN	11.35 m ²
COCINA / KITCHEN	11.35 m ²
DORMITORIO 1 / BEDROOM 1	8.60 m ²
BANJO / BATHROOM	2.40 m ²
BANJO / BATHROOM	6.60 m ²
PASO / CORRIDOR	3.50 m ²

PLANTA PRIMERA / FIRST FLOOR	
DORMITORIO 2 / BEDROOM 2	10.25 m ²
DORMITORIO 3 / BEDROOM 3	14.25 m ²
BANJO / BATHROOM	3.50 m ²
BANJO / BATHROOM	3.50 m ²
PASO / CORRIDOR	2.55 m ²
ESCALERA / STAIR	5.40 m ²

FORCHES / PORCH	19.40 m ²
TERRAZA 1 / TERRACE 1	9.20 m ²
TERRAZA 2 / TERRACE 2	24.40 m ²

SUPERFICIES CONSTR. / BUILT AREA

SUP. CERRADA / CLOSED AREA	154.00 m ²
CUBIERTA AREA + PORCHES + TERRACES	207.00 m ²
TOTAL CONSTR. AREA	361.00 m ²
PARCELA / PLOT	453.00 m ²

