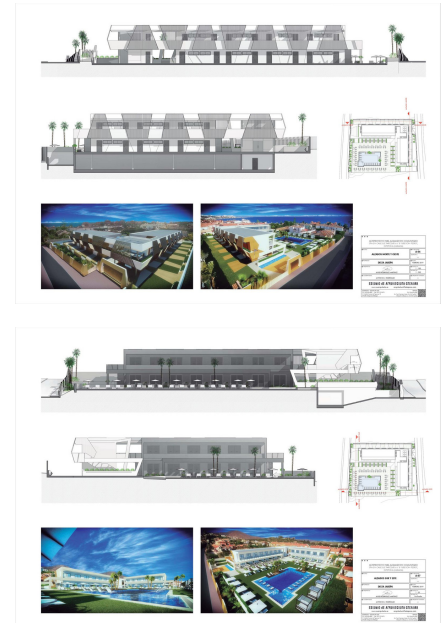




ALOJAMIENTO COMUNITARIO



Property type : Plot

Location : Estepona

Bedrooms : 0

Bathrooms : 0

Swimming pool : Private

Garden : Private

Orientation : South

Views : Sea views

Parking : Open private parking

House area : 838 m²

Plot area : 3434 m²

✓ Close to sea

Unique project of an exclusive aparthotel in Estepona located on the plot of 3434m2. Possible to built an aparthotel of 838m2 with 2 storeys, 28 apartments, restaurant, swimming pool and underground parking. Great location, close to town, supermarkets, amenities and the Playa don Pedro beach. Nearby are also several golf clubs, such as Santa Maria Golf, Valle Romano and Estepona Golf. Project with a modern, up-to-date design done by a professional architect. A sensible investment which will bring a good profit.



