



**Property type :** Detached Villa

**Swimming pool :** Private

**House area :** 134 m<sup>2</sup>

**Location :** Pinoso

**Plot area :** 15658 m<sup>2</sup>

**Bedrooms :** 3

**Bathrooms :** 2

✓ Garden

✓ Airconditioning

#### NEW BUILD VILLAS IN PINOSO

New Build Independent modern villas that can be built on rustic or urban plots of land we have a wide range available in the area of Pinoso:

- 3 bedrooms, 2 bathrooms
- Private swimming pool
- Full installation of air conditioning
- Full equipped kitchen
- Big choice of quality materials
- Mains electricity and water
- 4 solar panels included
- AA Energy Label
- 15.658 m<sup>2</sup> plot in Pinoso
- 3.000 m<sup>2</sup> fenced plot for easy maintenance
- Motorised sliding gate

On the rustic plots, about 3.000 m<sup>2</sup> of the total plot will be fenced and the houses will be delivered with about 1.000 m<sup>2</sup> of gravel around the house.

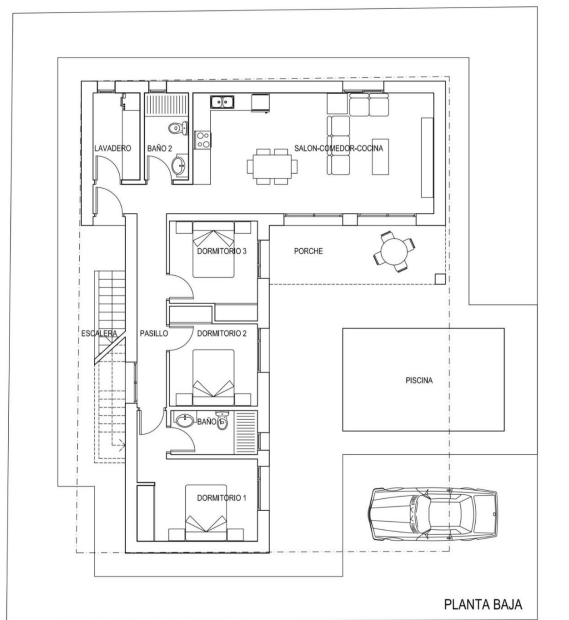
The house has a private swimming pool and photovoltaic solar panels for the electricity supply.

There are several rustic plots to choose from in different locations, each with a different price (in the prices published in this advert a plot with a value of 40.000 eur has been considered, if the buyer chooses another plot, the final price will be recalculated accordingly).

The delivery period is 8 months from the granting of the building licence.

It is acquired under a self-promotion regime: the buyer makes payments on account of the price as the builder executes the work.





SUP. ÚTILES INTERIORES		SUP. ÚTILES EXTERIORES		SUP. CONSTRUIDAS TOTALES	
SALON-COM.-COCINA	33,60 m <sup>2</sup>	PORCHE	11,85 m <sup>2</sup>	INTERIORES	115,40 m <sup>2</sup>
PASILLO	10,00 m <sup>2</sup>	ESCALERA	5,75 m <sup>2</sup>	EXTERIORES	18,85 m <sup>2</sup>
BAÑO 2	4,40 m <sup>2</sup>			SUP. CONST. TOTAL	134,25 m <sup>2</sup>
LAVADERO	4,70 m <sup>2</sup>	<b>SUP. ÚTILES TOTALES</b>			
DORMITORIO 1	13,05 m <sup>2</sup>	INTERIORES	88,65 m <sup>2</sup>	SUP. PISCINA	19,25 m <sup>2</sup>
BAÑO 1	4,40 m <sup>2</sup>	EXTERIORES	17,60 m <sup>2</sup>		
DORMITORIO 2	9,25 m <sup>2</sup>	SUP. ÚTIL TOTAL	106,25 m <sup>2</sup>		
DORMITORIO 3	9,25 m <sup>2</sup>				

