

Property type : Apartment

Location : Benahavís

Bedrooms : 3

Bathrooms : 3

Swimming pool : Communal pool

Views : Sea views

House area : 146 m²

✓ Close to golf

✓ Jacuzzi

✓ Gymnasium

✓ Airconditioning

✓ Lift

EXCLUSIVE URBANISATION WITH SEA VIEWS ON THE COSTA DEL SOL

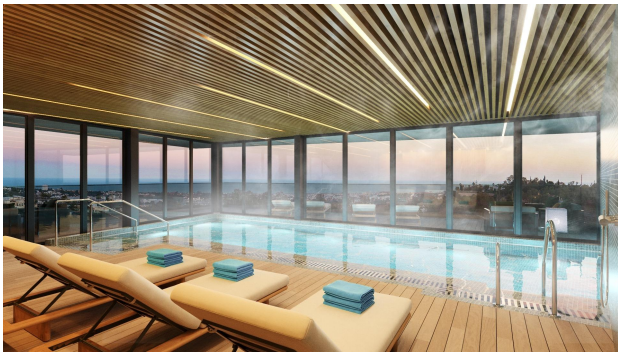
Development of 56 exclusive 3 and 4 bedroom homes with panoramic sea views, distributed in 7 blocks with only 2 homes per floor, which further increases their exclusivity. Fully equipped kitchens. All bedrooms en suite, with an extra bathroom for guests. Each bedroom has direct access to the terrace, so you can wake up with the best views of the Costa del Sol and enjoy breathtaking views of the entire coastline and the Bay of Marbella, up to the Rock of Gibraltar and Africa in the background.

Gated community with security, gardens, 3 swimming pools to choose between swimming, leisure or indoor pool, to enjoy the long periods of good weather that the Costa del Sol offers you. Co-working area, fully equipped gymnasium, and a fabulous spa to relax in.

It is located halfway between Malaga and Gibraltar airports, making both accessible in just over 40 minutes by car. Surrounded by the best golf courses on the Costa del Sol. Just 10 minutes drive from the beach, with its beach bars and distinguished clubs, and the same distance from Puerto Banús, with its marina, one of the most famous in Europe.

Of all the Mediterranean coastline, the beaches, towns and golf courses of the Costa del Sol are the only ones where you can enjoy more than 320 days of sunshine a year and an average annual temperature of 20° Celsius. A place to enjoy the true Mediterranean lifestyle.





Escala Gráfica

VIVIENDA 3DT2

BLOQUE 01_FPLA - 3 DORMITORIOS

CUADRO DE SUPERFICIES

S. 01 Interior Vivienda	161,1 m ²
S. 02 Exterior 1a. Vivienda + p. 2.000	94,9 m ²
S. 03 Exterior Vivienda	35,5 m ²
S. 04 Core. 0h. + p. 2.000 +	206,6 m ²
S. 05 Edif. 0h.	

CUADRO DE SUPERFICIES ANUALIZA

S. 06 Vivienda 0 210265	131,2 m ²
S. Core. 0h. + p. 2.000 218.055	179,3 m ²

Las superficies incluyen áreas cubiertas con un total de 218.055 m² de superficie de cubierta y 131,2 m² de superficie de fachada de viviendas en planta.

El presente plano es un documento de carácter informativo y no constituye un contrato. Toda información contenida en este documento es meramente orientativa y no debe ser utilizada para tomar decisiones de inversión. El presente plano es un documento de carácter informativo y no constituye un contrato. Toda información contenida en este documento es meramente orientativa y no debe ser utilizada para tomar decisiones de inversión.