

Property type : Penthouse

Swimming pool : Communal pool

House area : 126 m²

Location : La Linea De La Concepcion

Bedrooms : 3

Bathrooms : 2

✓ Close to golf

✓ Lift

✓ Airconditioning

NEW BUILD RESIDENTIAL COMPLEX IN LA ALCAIDESA, SAN ROQUE

New Build residential development in La Alcaidesa, the province of Cadiz, distributed in 55 multi-family homes, with options of 2 and 3 bedrooms with large terraces that allow you to enjoy panoramic views of the golf course of La Alcaidesa and make the most of the natural environment.

In addition, all homes have garage and storage room in the basement.

The residential complex offers very complete common areas, composed of landscaped spaces, swimming pool with sun loungers, gastroteca and a parking for buggies so that the owners can enjoy their free time to the maximum without having to leave their homes. In addition, the residential complex is fully enclosed and fenced for the safety of the residents.

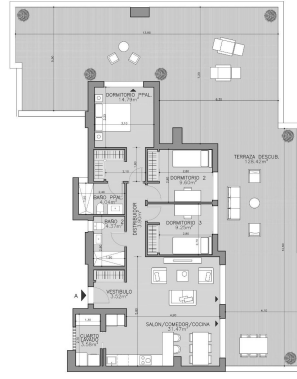
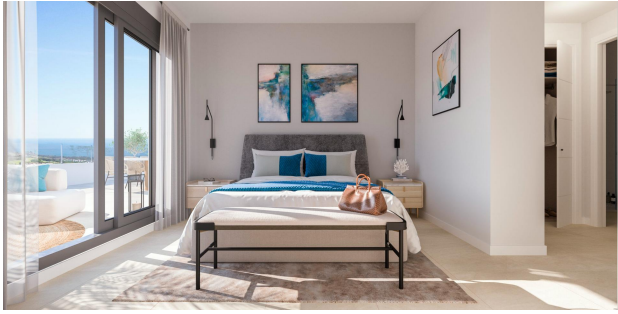
The development is located in La Alcaidesa, between several urban centers of the Campo de Gibraltar, where there is a wide variety of services (clinics, schools, banks, pharmacies, buses) and a numerous leisure/cultural offer (golf club, gym, restaurants, shopping centres, etc).

At 15 km from the International Airport of Gibraltar and 28 km from the Port of Algeciras, easy access to the A-7/N-340 and link to the AP-7 freeway.

San Roque is a municipality of Spain belonging to the province of Cádiz, which in turn is part of the autonomous community of Andalusia. It is also part of the comarca of Campo de Gibraltar.

San Roque has splendid beaches with cliffs overlooking Africa and the Strait of Gibraltar, ideal for both water sports and bird watching. These include El Cabrero or Cala Taraje on the outskirts of Torreguadiaro, Sotogrande and Torrecarbonera.





BLOQUE 3
PLANTA APTCO - LETRA A

Superficie Útil Interior	84,52 m ²
Superficie Útil Exterior Cubierta	84,52 m ²
Superficie Útil Total	169,04 m ²
Superficie Disponible para Construcción	108,00 m ²
Superficie Disponible para Construcción (sin terraza)	108,00 m ²
Superficie Útil	169,04 m ²
Superficie Construida	108,00 m ²

Superficie Útil Terraza (sin piscina)
 Superficie Útil
 Superficie Construida

Escala 1:1000

