

Property type : Detached Villa

Location : Estepona

Bedrooms : 5

Bathrooms : 5

Swimming pool : Private

Views : Sea views

House area : 220 m²

Plot area : 418 m²

✓ Solarium

✓ Pre-air conditioning

Exclusive New Build Villas on the Front Line of a Golf Course in Estepona – Luxury Villas with Sea and Golf Views – This exclusive residential project features 14 newly built detached villas located on the front line of the prestigious Azata Golf Club in Estepona. With a privileged location and south-southeast orientation, each property offers stunning panoramic views of the golf course, the Mediterranean Sea and the surrounding mountains, providing an unrivalled setting of peace, nature and luxury. – Spacious and elegant homes – The villas have been designed to offer maximum comfort, privacy and elegance. Available in 4, 5 and 6 bedroom configurations, many with en-suite bathrooms, these homes stand out for their spacious interiors, high-quality materials and contemporary design. – Each villa includes: – Spacious terraces and private garden – Roof terrace with spectacular views – Some units with basement, ideal for creating additional space such as a gym, cinema room or guest area – Fully equipped kitchen – Pre-installation of ducted air conditioning – Premium finishes in bathrooms and interior carpentry – A Premium Lifestyle in Estepona – Known as ‘The Garden of the Costa del Sol’, Estepona combines the charm of a traditional Andalusian village with modern amenities and infrastructure. Its cobbled streets lined with flowers, vibrant old town and golden beaches make this town the perfect destination for both year-round living and unforgettable holidays. – Strategic Location with Excellent Connections – This development is located just: – 1.2 km from the beach – 1 km from shopping areas and restaurants – 5 km from the centre of Estepona – 15 km from Sotogrande and its exclusive marina – 20 km from Puerto Banús, the epicentre of luxury on the Costa del Sol – 45 km from Gibraltar Airport – 50 km from Malaga International Airport – In addition, it is surrounded by three prestigious golf courses, making it an ideal choice for golf enthusiasts looking for tranquillity without sacrificing comfort. – Discover Your New Home on the Costa del Sol – These villas represent a unique opportunity for those seeking an exclusive lifestyle in a privileged natural environment. Contact us today for more information or to schedule a visit and discover your future home in Estepona.

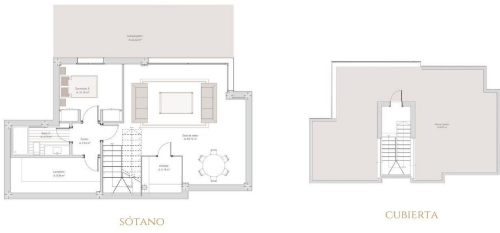




9A-TIPO I PARCELA 2,5,6,7



9A-TIPO I PARCELA 2,5,6,7



9A-TIPO I PARCELA 2,5,6,7

TIPO 1.5-01 SUP. UTIL. BAJO Y PRIMERA		
Planta	Nombre	Superficie
F. BAJO	Basement	1.200
	Planta Baja	1.200
	Planta Primera	1.200
P.L.C.	Planta 1	1.200
	Planta 2	1.200
	Planta 3	1.200
	Planta 4	1.200
	Planta 5	1.200
	Planta 6	1.200
	Planta 7	1.200
	Planta 8	1.200
	Planta 9	1.200
	Planta 10	1.200
		10.800 m ²
TIPO 1.5-01 SUP. UTIL. SÓTANO		
Planta	Nombre	Superficie
SÓTANO	Basement	1.200
	Planta Baja	1.200
	Planta Primera	1.200
	Planta Segunda	1.200
	Planta Tercera	1.200
	Planta Cuarta	1.200
		6.000 m ²
		67.58 m ²
TIPO 1-SUP. CONSTRUIDAS BAJO, 1º Y CUBIERTA		
		193,81 m ²
TIPO 1-S-02 SUP. CONSTRUIDAS SÓTANO		
		66,37 m ²
TIPO 1-TERRAZAS		100,58 m ²

