



**Property type :** Apartment

**Swimming pool :** Yes

**House area :**

46 m<sup>2</sup>

**Location :** Benidorm

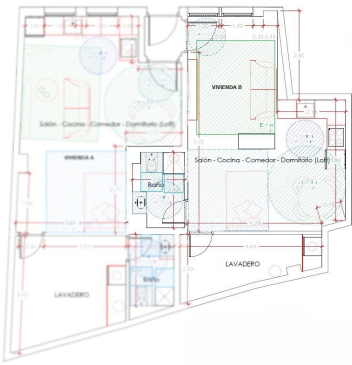
**Bedrooms :** 1

**Bathrooms :** 1

We present to you a magnificent fully renovated home, located in the prestigious Poniente area, one of the newest and most sought-after neighborhoods in Benidorm. With an unbeatable location, this apartment combines modern design, absolute comfort, and proximity to the Mediterranean Sea. Just 230 meters from Poniente Beach, you can enjoy its beautiful promenade, crystal-clear waters, and the relaxed atmosphere that defines this area. The property is also situated on Benidorm's main avenue, surrounded by restaurants, cafés, boutiques, supermarkets, and all the services you need for comfortable year-round living. ? Main Features: Usable area: 39.60 m<sup>2</sup> Built area: 46.57 m<sup>2</sup> Full designer renovation with high-quality materials and elegant finishes Bright and spacious living room decorated in warm tones with a modern, cozy layout Fully equipped kitchen integrated into the living room, with light wood cabinetry and contemporary details Suite-style bedroom with ambient lighting, a backlit decorative wall, and a relaxing atmosphere Modern bathroom with a large walk-in shower, new fixtures, and a minimalist style ? Prime Location: 230 m from the sea Supermarket only 60 m away (Duaprix: 70 m) Bus stop: 30 m Underground parking: 120 m Everything is designed for maximum comfort without the need for a car. ? A perfect home for living or investing This apartment is ideal as a permanent residence, a second home, or a tourism investment, thanks to its modern design, strategic location, and high demand in the area. If you are looking for a place where every detail has been carefully chosen to offer well-being, aesthetics, and functionality, this is your apartment in Benidorm.



Studio -2  
S=47,8m2



SUPERFICIES ÚTILES	
VIVIENDA B	
Salón - Cocina - Comedor - Dormitorio (Lobby)	28,74 m²
Baño	3,62 m²
Lavadero	7,24 m²
TOTAL	39,60 m²

SUPERFICIES CONSTRUIDAS	
VIVIENDA B	
TOTAL	46,57 m²