



**Genre de la maison :** Villa individuelle

**Lieu :** Coín

**Chambres :** 3

**Salles de bains :** 2

**Piscine :** Privé

**Jardin :** Privé

**Orientation :** Sud

**vues :** Vues sur la montagne

**Stationnement :** Garage Fermé

**Superficie de la propriété :**

215 m<sup>2</sup>

**Surface du terrain :**

609 m<sup>2</sup>

✓ Armoires encastrées

✓ Buanderie

✓ Climatisation

✓ Salle de stockage

✓ Terrasse

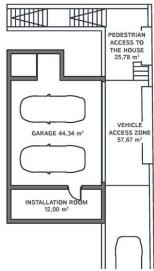
✓ Ascenseur

✓ produits blancs





**BASEMENT**

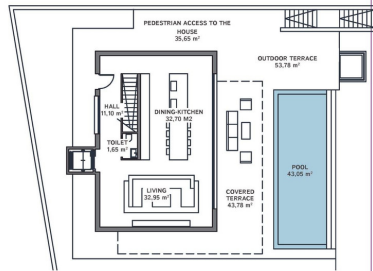


**GENERAL:**

Floor	600.00 m <sup>2</sup>
Basal area	275.75 m <sup>2</sup>
Constructed area	265.42 m <sup>2</sup>
Total built area	540.21 m <sup>2</sup>
Covered	272.25 m <sup>2</sup>
Pool	36.75 m <sup>2</sup>
Access area	55.19 m <sup>2</sup>
Outdoor terrace	55.19 m <sup>2</sup>
Covered Parking Spaces	2 ud
Uncovered Parking Spaces	1 ud

The information contained in this document is for guidance only and has no contractual value.

**GROUND FLOOR**

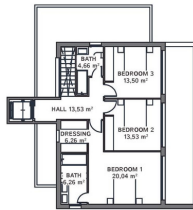


**GENERAL:**

Floor	600.00 m <sup>2</sup>
Basal area	275.75 m <sup>2</sup>
Constructed area	265.42 m <sup>2</sup>
Total built area	540.21 m <sup>2</sup>
Covered	272.25 m <sup>2</sup>
Pool	36.75 m <sup>2</sup>
Access area	55.19 m <sup>2</sup>
Outdoor terrace	55.19 m <sup>2</sup>
Covered Parking Spaces	2 ud
Uncovered Parking Spaces	1 ud

The information contained in this document is for guidance only and has no contractual value.

**TOP FLOOR**



**GENERAL:**

Floor	600.00 m <sup>2</sup>
Basal area	275.75 m <sup>2</sup>
Constructed area	265.42 m <sup>2</sup>
Total built area	540.21 m <sup>2</sup>
Covered	272.25 m <sup>2</sup>
Pool	36.75 m <sup>2</sup>
Access area	55.19 m <sup>2</sup>
Outdoor terrace	55.19 m <sup>2</sup>
Covered Parking Spaces	2 ud
Uncovered Parking Spaces	1 ud

The information contained in this document is for guidance only and has no contractual value.

OUTDOOR AND INDOOR LIGHTING		GOLD PLUS			
LIVING ROOM AND BEDROOMS	HALL AND STEPS	KITCHENS BATHROOMS AND TOILETS	TERRACES	ACCESS AND OUTDOORS	OTHER ROOMS
<p>Recessed lamp ceiling Brand: ELMC Model: PTC2 8x 90x 90 lum.</p> <p>Coffin Monochrome LED strip Brand: ELMC Model: PTC2 10x 90x 90 lum.</p> <p>Emergency lamp Brand: GIGALUX Model: ZPER</p>	<p>Recessed lamp ceiling Brand: ELMC Model: PTC2 8x 90x 90 lum.</p> <p>Coffin Monochrome LED strip Brand: ELMC Model: PTC2 10x 90x 90 lum.</p> <p>Emergency lamp Brand: GIGALUX Model: ZPER</p>	<p>Recessed lamp ceiling Brand: ELMC Model: PTC2 8x 90x 90 lum.</p> <p>Coffin Monochrome LED strip Brand: ELMC Model: PTC2 10x 90x 90 lum.</p> <p>Emergency lamp Brand: GIGALUX Model: ZPER</p>	<p>Wall lamp Brand: BAKITA Model: BAKITA 2x4 180 lum.</p> <p>Coffin Monochrome LED strip Brand: ELMC Model: PTC2 10x 90x 90 lum.</p> <p>Emergency lamp Brand: GIGALUX Model: ZPER</p>	<p>Recessed lamp ceiling Brand: ELMC Model: PTC2 8x 90x 90 lum.</p> <p>Coffin Monochrome LED strip Brand: ELMC Model: PTC2 10x 90x 90 lum.</p> <p>Emergency lamp Brand: GIGALUX Model: ZPER</p>	<p>Recessed lamp ceiling Brand: ELMC Model: PTC2 8x 90x 90 lum.</p> <p>Coffin Monochrome LED strip Brand: ELMC Model: PTC2 10x 90x 90 lum.</p> <p>Emergency lamp Brand: GIGALUX Model: ZPER</p>