

**Typ nieruchomości :**  
Wolnostojąca willa

**Miejscowość :** Coín

**Sypialnie :** 3

**Łazienka :** 2

**Basen :** Prywatny

**Ogród :** Prywatny

**Położenie :** Południe

**!vistas :** Widoki na góry

**Parking :** Zamknięty Garaż

**Powierzchnia  
mieszkania :**

215 m<sup>2</sup>

**Działka :**

609 m<sup>2</sup>

- ✓ Szafy w zabudowie
- ✓ Pomieszczenie gospodarcze
- ✓ Klimatyzacja

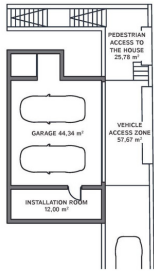
- ✓ Magazyn
- ✓ Taras

- ✓ Winda
- ✓ Artykuły AGD





**BASEMENT**

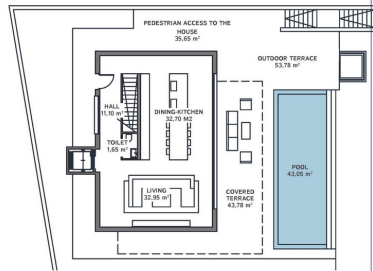


**GENERAL:**

Floor	600.00 m <sup>2</sup>
Useful area	275.75 m <sup>2</sup>
Constructed area	265.42 m <sup>2</sup>
Total built area	565.21 m <sup>2</sup>
Covered	272.25 m <sup>2</sup>
Pool	36.75 m <sup>2</sup>
Access area	55.19 m <sup>2</sup>
Outdoor terrace	55.19 m <sup>2</sup>
Covered Parking Spaces	2 ud
Uncovered Parking Spaces	1 ud

The information contained in this document is for guidance only and has no contractual value.

**GROUND FLOOR**

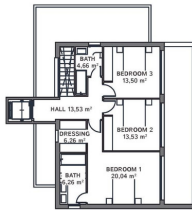


**GENERAL:**

Floor	600.00 m <sup>2</sup>
Useful area	293.00 m <sup>2</sup>
Constructed area	283.47 m <sup>2</sup>
Total built area	565.21 m <sup>2</sup>
Covered	272.25 m <sup>2</sup>
Pool	36.75 m <sup>2</sup>
Access area	55.19 m <sup>2</sup>
Outdoor terrace	55.19 m <sup>2</sup>
Covered Parking Spaces	2 ud
Uncovered Parking Spaces	1 ud

The information contained in this document is for guidance only and has no contractual value.

**TOP FLOOR**



**GENERAL:**

Floor	600.00 m <sup>2</sup>
Useful area	275.75 m <sup>2</sup>
Constructed area	265.42 m <sup>2</sup>
Total built area	565.21 m <sup>2</sup>
Covered	272.25 m <sup>2</sup>
Pool	36.75 m <sup>2</sup>
Access area	55.19 m <sup>2</sup>
Outdoor terrace	55.19 m <sup>2</sup>
Covered Parking Spaces	2 ud
Uncovered Parking Spaces	1 ud

The information contained in this document is for guidance only and has no contractual value.

OUTDOOR AND INDOOR LIGHTING		GOLD PLUS			
LIVING ROOM AND BEDROOMS	HALL AND STEPS	KITCHENS BATHROOMS AND TOILETS	TERRACES	ACCESS AND OUTDOORS	OTHER ROOMS
<p>Recessed lamp ceiling Brand: ELMC Model: PTC2 8x 900 lum.</p> <p>Coffered recessed LED strip Brand: ELMC Model: PTC2 8x 900 lum.</p> <p>Emergency lamp Brand: GIGALUX Model: ZPER1</p>	<p>Recessed lamp ceiling Brand: ELMC Model: PTC2 8x 900 lum.</p> <p>200x200 recessed LED strip Brand: ELMC Model: COTTON 8x 900 lum.</p> <p>Emergency lamp Brand: GIGALUX Model: ZPER1</p>	<p>Recessed lamp ceiling Brand: ELMC Model: PTC2 8x 900 lum.</p> <p>Emergency lamp Brand: GIGALUX Model: ZPER1</p>	<p>Wall lamp Brand: BAKETA Model: SANDER2 2x4 780 lum.</p> <p>Coffered recessed LED strip Brand: ELMC Model: PTC2 8x 900 lum.</p> <p>Emergency lamp Brand: GIGALUX Model: ZPER1</p>	<p>Recessed lamp ceiling Brand: BAKETA Model: SANDER R 8x 480 lum.</p> <p>Recessed lamp ceiling Brand: BAKETA Model: SANDER R 8x 480 lum.</p> <p>Emergency lamp Brand: GIGALUX Model: ZPER1</p>	<p>Recessed lamp ceiling Brand: GIGALUX Model: ZPER1 300x 2400 lum.</p> <p>Recessed lamp ceiling Brand: GIGALUX Model: ZPER1 300x 2400 lum.</p> <p>Emergency lamp Brand: GIGALUX Model: ZPER1 300x 2400 lum.</p>